



**Dangle**  
rope access specialists

**Delivering Excellence & Safety Worldwide**

Fabric Maintenance • Oil and Gas • Renewable Energies • Painting  
Rail & Highway Maintenance • Civils/Construction • Marine • Petro Chemical



# What is Rope Access?

Rope access, also known as industrial climbing or abseiling. In some parts of the world the old term of Steeplejack is still commonly used, however the name all points to the same thing, which is a highly skilled form of work that involves ropes, access, specialist safety equipment and highly trained, multi disciplined technicians working at height, in a vast range of different environments, in all corners of the world.



The role was initially developed from techniques used in climbing and caving and was further advanced so that repairs, maintenance tasks and painting could all be carried out safely, at height, without having to rely on scaffolding or other expensive and invasive methods of reaching the work location.

Today, there are lots of opportunities within the field of rope access, as more businesses and sectors require rope access systems to provide a safe, rapidly deployed and secure method of working at height. Allowing multi skilled technicians to work from high and difficult to reach locations, the deployment of rope access methods allow workers to complete work efficiently and offers great cost saving benefits when compared to traditional access systems.

## What type of tasks can you get done with rope access?

### Geotechnical industries

Some of the most exciting and challenging rope access roles are in geotechnical industries, with technicians manoeuvring caves, steep roadsides or rail embankments and other challenging environments which test their skills and nerve!

Rope access is needed in many of these environments as the vast majority of natural structures are unreachable by scaffolding, or simply too costly, meaning the only way to access hard to reach environments is by rope. Roles involved often include drilling, meshing, cabling, and inspecting natural structures in order to ensure that they are structurally sound and pose no risk to the public.

### Offshore industries

Rope access tasks have become synonymous with many offshore industries, especially those that require specialist services in oil and gas environments. From working over the side above water or climbing a drill platforms Derrick, only those specially trained to work at heights of up-to 200m should be considered.

The role of rope access technicians in an offshore environment first began in the 1980's where workers were expected to conduct rust removal, general repair work, plating, welding and inspection to name a few.

### Built structures

There's also lots of opportunities to explore with rope access on land too, with structures such as towers, bridges, iconic landmarks and dams often requiring repair and maintenance work all year round. Many buildings and structures also require extensive cleaning work in order to keep them in the very best condition. Regulation and policy changes often pose a difficult problem for building owners or facilities management as these changes can often mean unexpected costs, which is why deciding to use rope access makes for a smart and sensible choice.

### Energy industries

There's also lots of different rope access possibilities available in the energy sector, with qualified rope access technicians working on power stations, wind farms (both onshore and offshore) and refineries all around the world. Roles include maintenance and repair tasks, to things like wind turbine blade inspections, and even retro fitting. Rope access inspectors have a huge role to play in the surveillance and safe upkeep of these critical energy environments.



# About Us...

Dangle are a traditional industrial maintenance services company as well as a multi disciplined rope access provider. Our Management & Supervision team have substantial industry experience and we are extremely well positioned to offer our services with absolute confidence that we can meet your needs and expectations without compromise due to our impressive track record and industry experience.



Dangle have completed over 1,100,000 productive hours LTI (Lost Time Incident) free which is absolute testimony to the focus we have in installing and promoting the right safety culture throughout our business. The culture is heavily embedded in our personnel on site and management supporting the operations. Our ethos is simple "Safety and Quality first productivity and Results will follow"

We currently provide our services to a number of clients in the Renewables, Marine power & Engineering, Oil & Gas, Facilities Maintenance, Infrastructure Rail & National Industry sectors. We have delivered these services while maintaining our impeccable safety performance and have managed to establish an impressive reputation with all our customers through our quality and commitment to deliver, strengthening our business and service offerings through repeat business.

Dangle are committed to delivering a service with quality standards, safe solutions, while continuously maintaining an effective QHSE Management System based on the ISO framework 9001, 14001 & 45001.

Dangle provide multi-discipline working at height teams to carry out a range of specialist tasks to reduce costs and improve efficiency:

All types of work considered

- **Coating Application & Inspection**
- **Tank & Vessel Cleaning**
- **Rope Access & Rigging**
- **Wind Farm Blade and Composite expertise**
- **Facilities Maintenance**
- **Specialist Cleaning**
- **Insulation and Cladding**



# UK & Worldwide Experience

Dangle are an experienced, multi discipline contractor with strong management experience in providing industrial service solutions to a number of market sectors.

Dangle have experience with a wide range of projects and contracts ranging from minor works to large scale maintenance and regeneration campaigns and frameworks.

We work predominately in the UK but have had large operations in Germany and Belgium with experience in a number of other countries and continents around the world demonstrating our ability to deliver a quality service globally.



## Market Sectors

- Marine
- Renewables
- Oil & Gas
- Engineering
- Rail & Highways
- Civils / Construction
- New Build Fabrication
- Petro Chemicals



# Marine Fabric Maintenance Service

Our marine service offerings comprise of project management, supervision, inspection, surface preparation, all types of coating application utilising Rope Access and specialised cleaning.



With over three decades of Marine experience at the highest level contained within our organisation, Dangle are fully attuned with the diverse demands the marine sector generates and we are equally diverse and capable of adapting very quickly to ensure we meet the needs of our clients safely, quickly and efficiently.

Our experienced management team have an extensive track record in the successful delivery of multi-disciplined services.

- **Dundee**
- **Rosyth**
- **Wick**
- **Barrow-in-Furness**
- **Harland & Wolff**
- **Cammell Lairds**
- **Able**
- **Guernsey**
- **Portsmouth**
- **Montrose**

Working closely with carefully selected partner companies, coupled with the experience and impeccable safety record, our operatives are able to offer a first class service safely and consistently to the highest standards, fully supported by our back office team.





# Fabric Maintenance

Our operatives specialise in preparation, paint application, coating inspection, surveys and rope access on and offshore internationally.



We can provide rope access teams which include highly experienced NACE and ICorr coatings inspectors allowing a comprehensive assessment of any structure made quickly efficiently and most importantly without the need for costly scaffolding.

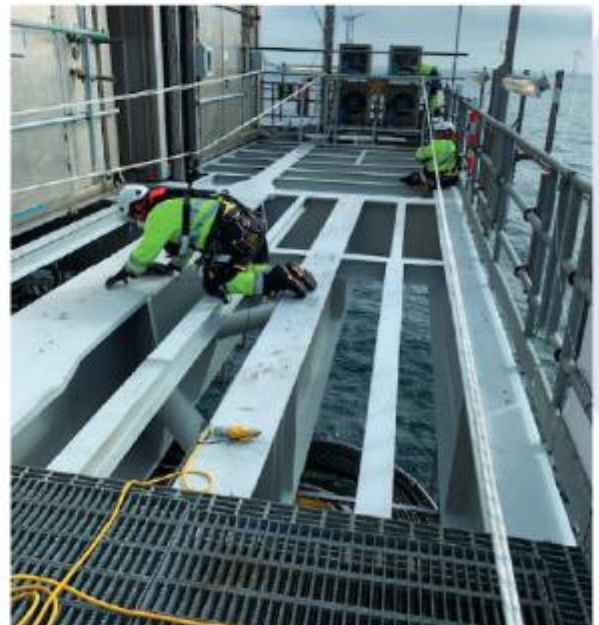
Our field team are a minimum of ICorr/NACE level 2 and can be supervised by an ICorr Level 3 Inspector if required by the client. The following surveys can all be carried out via rope access by highly experienced inspectors.

Coating, Paint Inspection & Surveys Blasting & Painting Supervision, Coatings Failure Analysis, Insulation, Passive Fire Protection (PFP), Paint Analysis & Environmental Testing are all within our remit.

Advancements in industrial paints and more stringent preparation standards have meant that painting has become a much more skilled and technical operation.

It has been common place in many industries for unskilled and unqualified operatives to carry out painting works, in turn leading to poor application and costly coatings failures.

All of our painting operatives are hand picked, to ensure they have the required levels of competency and experience in their chosen fields, this way we can guarantee that the work carried out by Dangle is of the highest quality.





# Vessel & Tank Cleaning

Dangle have delivered a number of Vessel and Tank cleaning work scopes in the marine, oil and gas, industrial and petrochemical environments.



We have suitably qualified and experienced personnel who are trained in this specialist cleaning and work to safety procedures to ensure the highest standards are achieved and incidents / accidents do not occur. Dangle offers its services in the following markets

- **Oil & Gas**
- **Marine**
- **Petrochemical**
- **Facilities Maintenance**

## Range of Service

- **Technical Support**
- **Site Surveys**
- **High Pressure Washing**
- **Ultra High Pressure Jetting >30,000 psi**
- **Vacuum Transfer**
- **Waste Disposal**
- **Confined Space Entry**
- **Inspections**
- **Removal of Contaminants**





# Industrial Rope Access - IRATA

Dangle are a leading supplier of Industrial Rope Access Services.

Offering a wide range of expertise and service for difficult to access areas, specialist installations, inspections, maintenance works and working at height safety advice.

Our experienced teams have extensive knowledge and skills to ensure projects are delivered on time and within budget.

Specific rope work was utilised to reach areas which may not have been accessible by other means and has been developed in order to maximise rope access methods to reach inaccessible areas within the work environment.

Rope access equipment is lightweight and able to be removed in rapid time, which offers greater flexibility and speed, and therefore makes rope access a preferred method of access for many difficult sites allowing a variety of task to be undertaken. Each project is given the 'Safe and Best practice' approach ensuring all work is carried out to the highest safety standards and in line with the UK's working at height regulations.

Rope Access techniques enables certain work, maintenance and inspections to be carried out, which may not have been possible using other conventional access methods.

Examples being complex buildings and structures, such as light houses, oil rigs, ships, wind turbines, bridges, Pylons, stadiums and high rise buildings.

## WHY CHOOSE ROPE ACCESS

- **Cost & Time Effective**
- **Access Hard To Reach Areas**
- **No Invasive Access Equipment**
- **Unrivalled Safety Record**
- **Minimal Impact on Working Environment**
- **Only Experienced Professionals working at height**





# Renewables

The United Kingdom has the largest amount of offshore wind structures in Europe. If the expected lifetime of the surface coating is less than the lifetime of the blade, suitable inspection and maintenance intervals should be specified by OEM's.



## Wind Farm LEP Application

Using rope access our highly skilled team can inspect and repair all manner of leading edge erosion. We can also apply retrofitting power curve upgrades in soft shell, leading edge tape or the most cutting edge coatings all from various manufactures to keep your blades turning with maximum efficiency and minimum downtime thanks to our working at height experience.

## Retrofit Installation

We are becoming a leading wind farm retrofit installation provider of power curve upgrades (PCU) to wind turbine blades. When installed correctly, these small aerodynamic changes to a blade's profile reduce drag and increase lift. This improves power output and annual energy performance (AEP).

Towards the blades root, it transitions from the outer aerodynamically efficient profiles to the inner circular load-carrying structure at the interface between hub and blade. Because of the thickness of these airfoils, their aerodynamic properties are inherently poor. Thick airfoils cause early stall, however by carefully applying our VCs in this region, we can improve power performance of both old and new blades.

## Blade Inspection and Repair

Rope access blade repair, or composite repair as its often called allows our GWO certified and wind turbine blade repair accredited rope technicians to perform blade inspections and repairs. From prep and paint to lightning strike damages requiring core material replacement, we have you covered in all manners of wind farm maintenance.





# Civils/ Construction

Our rope access maintenance services encompass a wide range of high-level work with minimum disruption to your day to day business operations. We deliver all work professionally and safely and always go above and beyond to deliver a safe and efficient service.



We are experts in our field when it comes to delivering working at height building maintenance services across a range of industries. And, if you're looking for a high-rise building maintenance service that you can trust, you have certainly landed in the right place. We've created a helpful guide outlining everything that you need to know, from problems our clients face to the cost effective solutions we offer here at Dangle.

## Range of Service

- **High Rise Maintenance**
- **Cladding & Insulation**
- **No Invasive Access Equipment**
- **Fall Arrest Systems & Inspections**
- **PFP and Intumescent Coatings**





# We proudly supported

**ABB**

**Tennet**

**ROBERTSON**

**Hillcrest**

**CONTEGO**



**GUL AHMED**  
WIND POWER

**Guernsey Harbours**

**SCOTTISHPOWER**

**GRANADA**  
MATERIAL HANDLING

**ROSS & LIDDELL**  
the property people

**SMULDERS**

**Balfour Beatty**

**EFJ**  
EAST FIFE JOINERY

**SUMMIT**  
FACILITIES SERVICES

**ENIM**

**VICTOR BUYCK**  
STEEL CONSTRUCTION

**DEME**  
OFFSHORE

**UKRI** Natural Environment Research Council

**DC THOMSON**



Is corrosion  
in harsh  
environments  
a concern?

Is access a  
problem?



At Dangle Rope Access  
based in Dundee,  
we win awards doing this!



REACH THE UNREACHABLE,  
AND REACH OUT TO US TODAY

[onropes.co.uk](http://onropes.co.uk)  
[dangle@onropes.co.uk](mailto:dangle@onropes.co.uk)